



## Bathtub - Tara.

Tub mixer for wall-mounted installation - polished chrome

Article number: 25 100 892-00



- 9-1/2" Projection
- Round aerator
- Tub / shower diverter
- 3/8" Shower outlet
- Flanges Ø 2-1/2"
- 1/2" connection
- Center to center 5-7/8" ± 6"
- Water flow rate limited to max. 5.8 gpm
- Fittings group in compliance with DIN 4109: 1
- NOTE: Local building codes may require the use of an anti-scald device. Please refer to remote pressure balance valve (35 910 970 90)
- Internal backflow preventer.
- Combination with risers possible on request (x-TRA SERVICE).



polished chrome

Accessory is required for this item.

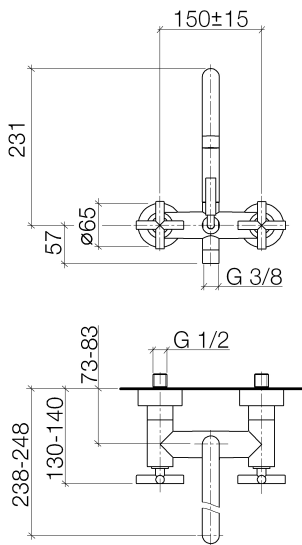


## Bathtub - Tara.

Tube mixer for wall-mounted installation - polished chrome

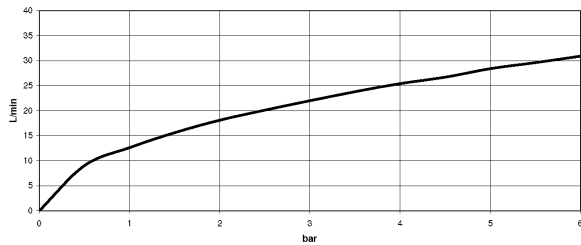
Article number: 25 100 892-00

## Dimensional drawing



All dimensions in mm / inch = mm x 0,0394

## Flow rate chart





Bathtub - Tara.

Tub mixer for wall-mounted installation - polished chrome

Article number: 25 100 892-00

## Other surface finishes



platinum matte  
25 100 892-06



platinum  
25 100 892-08



Dark Brass matte  
25 100 892-16



Dark Bronze matte  
25 100 892-17



black matte  
25 100 892-33



Dark Platinum matte  
25 100 892-99

More custom finish options are available via special production (xTra Service). Please see our finish matrix for availability and pricing or contact a Dornbracht representative.

## Required article



35 080 970-90 0010

Rough-in adapter -

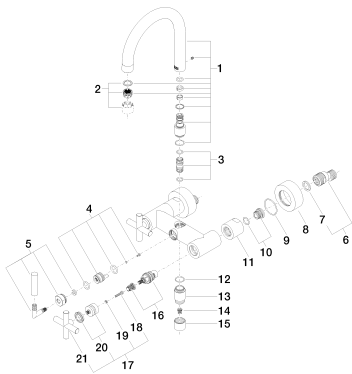


Bathtub - Tara.

Tube mixer for wall-mounted installation - polished chrome

Article number: 25 100 892-00

### Spare parts list



Number	Item Number	Designation	Number of units
--------	-------------	-------------	-----------------